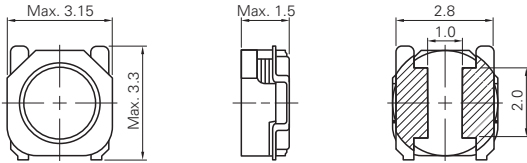
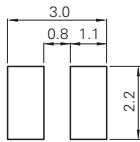


CDRH30D14R


DIMENSIONS (mm)
外形尺寸图

LAND PATTERNS (mm)
推荐焊盘尺寸

WIRE
线种

CONSTRUCTION
磁气构造图

 Operating Temperature Range
使用温度范围: -40°C~+105°C

Parts No.	L (μH) within	CDRH30D14R		
		D.C.R.(Ω) : Max. (Typ.)	Saturation Current (A) ^{*A} Max. (Typ.) 20°C	Temperature Rise Current (A) ^{*C} (Typ.)
CDRH30D14RNP-1R0NC	1.0±30%	48.8m(39.0m)	1.90(2.27)	(2.43)
CDRH30D14RNP-1R4NC	1.4±30%	62.5m(50.0m)	1.60(1.90)	(2.10)
CDRH30D14RNP-2R2NC	2.2±30%	92.5m(74.0m)	1.30(1.15)	(1.62)
CDRH30D14RNP-3R3MC	3.3±20%	133m(111m)	1.05(1.36)	(1.28)
CDRH30D14RNP-4R7MC	4.7±20%	184m(153m)	900m(1.10)	(1.16)
CDRH30D14RNP-6R4MC	6.4±20%	268m(223m)	750m(900m)	(950m)
CDRH30D14RNP-100MC	10±20%	473m(394m)	600m(730m)	(630m)

Measuring Freq. (L) / 电感测试频率(L)

 CDRH30D14R 100kHz, 1V
CDRH2D14 100kHz

Other / 其他

- *A Saturation Current: This indicates the value of D.C. current when the inductance becomes 30% lower than its nominal value.
- *B Saturation Current: This indicates the value of D.C. current when the inductance becomes 35% lower than its nominal value.
- *C Temperature Rise Current :The actual current when temperature of coil becomes ΔT=40°C. (Ta=20°C)
- *A 直流重叠容许电流: 通直流电流时, 电感公称值70%的电流值。
- *B 直流重叠容许电流: 通直流电流时, 电感公称值65%的电流值。
- *C 温度上升实力电流: 通直流电流时, 线圈温度上升ΔT=40°C时的电流值。(Ta=20°C)

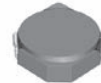
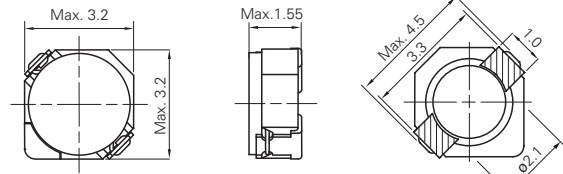
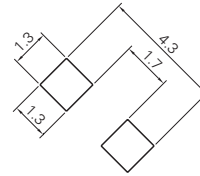
Weight (Ref.) / 重量 (参考值)

 CDRH30D14R 0.03g
CDRH2D14 0.04g

Packing Quantity / 捆包数量

 CDRH30D14R 4,000pcs/reel
CDRH2D14 1,000pcs/reel

CDRH2D14

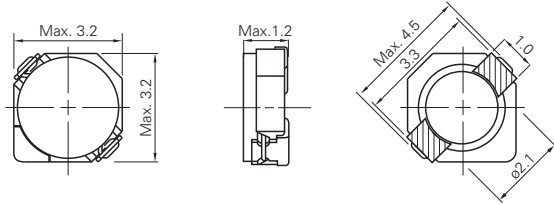
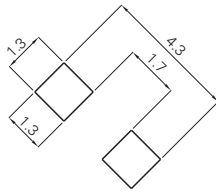

DIMENSIONS (mm)
外形尺寸图

LAND PATTERNS (mm)
推荐焊盘尺寸

WIRE
线种

CONSTRUCTION
磁气构造图

 Operating Temperature Range
使用温度范围: -40°C~+100°C

Parts No.	L (μH) within	CDRH2D14		
		D.C.R.(Ω) : Max. (Typ.)	Saturation Current (A) ^{*B} Max. (Typ.) 20°C	Temperature Rise Current (A) ^{*C} (Typ.)
CDRH2D14NP-R21NC	0.21±35%	21.0m(16.0m)	3.80(4.75)	(4.74)
CDRH2D14NP-R36NC	0.36±35%	26.0m(20.0m)	3.25(3.88)	(4.10)
CDRH2D14NP-R60NC	0.60±35%	33.0m(25.0m)	2.20(2.75)	(3.45)
CDRH2D14NP-R82NC	0.82±35%	39.0m(30.0m)	2.10(2.45)	(2.85)
CDRH2D14NP-1R2NC	1.2±30%	49.0m(28.0m)	1.95(2.16)	(2.75)
CDRH2D14NP-1R5NC	1.5±30%	63.0m(50.0m)	1.80(2.10)	(2.00)
CDRH2D14NP-1R8NC	1.8±30%	75.0m(60.0m)	1.65(1.76)	(1.80)
CDRH2D14NP-2R2NC	2.2±30%	94.0m(75.0m)	1.50(1.65)	(1.60)
CDRH2D14NP-2R7NC	2.7±30%	106m(85.0m)	1.35(1.55)	(1.40)
CDRH2D14NP-3R3NC	3.3±30%	125m(100m)	1.20(1.40)	(1.24)
CDRH2D14NP-3R9NC	3.9±30%	138m(110m)	1.10(1.30)	(1.12)
CDRH2D14NP-4R7NC	4.7±30%	169m(135m)	1.00(1.23)	(1.00)
CDRH2D14NP-5R6NC	5.6±30%	188m(150m)	950m(1.15)	(980m)
CDRH2D14NP-6R8NC	6.8±30%	213m(170m)	850m(1.03)	(920m)
CDRH2D14NP-8R2NC	8.2±30%	281m(225m)	800m(990m)	(800m)
CDRH2D14NP-100NC	10±30%	294m(235m)	700m(840m)	(760m)
CDRH2D14NP-120NC	12±30%	394m(315m)	620m(800m)	(640m)

CDRH2D11B/HP

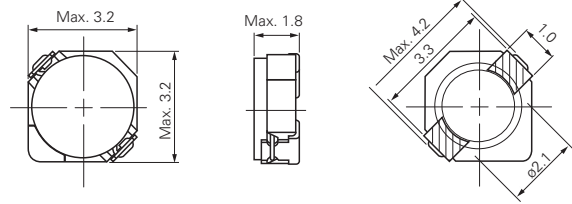
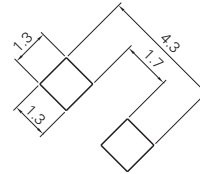

DIMENSIONS (mm)
外形尺寸图

LAND PATTERNS (mm)
推荐焊盘尺寸

WIRE
线种

CONSTRUCTION
磁气构造图

 Operating Temperature Range
使用温度范围：-40°C~+105°C

Parts No.	L (μH) within	CDRH2D11B/HP		
		D.C.R.(Ω) : Max. (Typ.)	Saturation Current (A) ^{*A} Max. (Typ.) 20°C	Temperature Rise Current (A) ^{*B} (Typ.)
CDRH2D11BHPHF-1R0PC	1.0±25%	68.6m(54.9m)	2.10(2.28)	(1.75)
CDRH2D11BHPHF-1R5PC	1.5±25%	104m(83.1m)	1.65(1.85)	(1.45)
CDRH2D11BHPHF-1R8PC	1.8±25%	116m(92.9m)	1.50(1.72)	(1.30)
CDRH2D11BHPHF-2R2PC	2.2±25%	133m(107m)	1.40(1.52)	(1.15)
CDRH2D11BHPHF-3R3PC	3.3±25%	195m(157m)	1.15(1.27)	(950m)
CDRH2D11BHPHF-4R7PC	4.7±25%	235m(188m)	950m(1.11)	(800m)
CDRH2D11BHPHF-5R6PC	5.6±25%	282m(226m)	900m(1.00)	(760m)
CDRH2D11BHPHF-6R8PC	6.8±25%	359m(288m)	780m(870m)	(650m)
CDRH2D11BHPHF-8R2PC	8.2±25%	406m(325m)	730m(810m)	(620m)
CDRH2D11BHPHF-100PC	10±25%	553m(442m)	630m(710m)	(520m)

CDRH2D16/LD


DIMENSIONS (mm)
外形尺寸图

LAND PATTERNS (mm)
推荐焊盘尺寸

WIRE
线种

CONSTRUCTION
磁气构造图

 Operating Temperature Range
使用温度范围：-40°C~+100°C

Parts No.	L (μH) within	CDRH2D16/LD		
		D.C.R.(Ω) : Max. (Typ.)	Saturation Current (A) ^{*A} Max. (Typ.) 20°C	Temperature Rise Current (A) ^{*B} (Typ.)
CDRH2D16LDNP-2R2NC	2.2±30%	47.0m(38.0m)	860m(1.12)	(2.20)
CDRH2D16LDNP-2R7NC	2.7±30%	61.0m(49.0m)	820m(1.05)	(1.90)
CDRH2D16LDNP-3R3NC	3.3±30%	67.0m(54.0m)	720m(880m)	(1.74)
CDRH2D16LDNP-3R9NC	3.9±30%	75.0m(60.0m)	700m(810m)	(1.60)
CDRH2D16LDNP-4R7NC	4.7±30%	101m(81.0m)	620m(730m)	(1.32)
CDRH2D16LDNP-5R6NC	5.6±30%	123m(98.0m)	570m(670m)	(1.25)
CDRH2D16LDNP-6R8NC	6.8±30%	158m(127m)	500m(600m)	(1.00)
CDRH2D16LDNP-8R2NC	8.2±30%	171m(137m)	450m(540m)	(950m)
CDRH2D16LDNP-100NC	10±30%	195m(156m)	420m(480m)	(920m)
CDRH2D16LDNP-120NC	12±30%	223m(179m)	390m(450m)	(850m)
CDRH2D16LDNP-150NC	15±30%	248m(198m)	350m(420m)	(810m)
CDRH2D16LDNP-180NC	18±30%	316m(252m)	320m(370m)	(730m)
CDRH2D16LDNP-220NC	22±30%	418m(335m)	280m(330m)	(600m)
CDRH2D16LDNP-270NC	27±30%	466m(373m)	260m(310m)	(530m)

Measuring Freq. (L) / 电感测试频率(L)

 CDRH2D11B/HP 100kHz
 CDRH2D16/LD 100kHz, 1V

Other / 其他

*A Saturation Current: This indicates the value of D.C. current when the inductance becomes 35% lower than its nominal value.

*B Temperature Rise Current :The actual current when temperature of coil becomes ΔT=40°C. (Ta=20°C)

*A 直流重叠容许电流：通直流电流时，电感称值65%的电流值。

*B 温度上升实力电流：通直流电流时，线圈温度上升ΔT=40°C时的电流值。(Ta=20°C)

Weight (Ref.) / 重量 (参考值)

 CDRH2D11B/HP 0.04g
 CDRH2D16/LD 0.06g

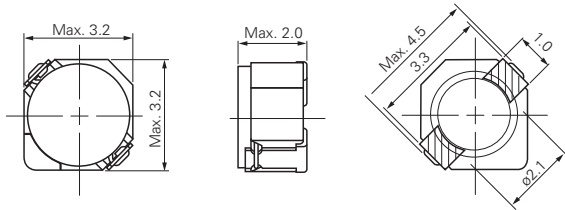
Packing Quantity / 捆包数量

 CDRH2D11B/HP 1,500pcs/reel
 CDRH2D16/LD 1,000pcs/reel

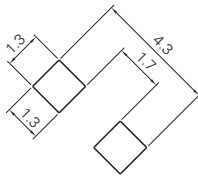
CDRH2D18/HP



DIMENSIONS (mm)
外形尺寸图



LAND PATTERNS (mm)
推荐焊盘尺寸



WIRE
线种



CONSTRUCTION
磁气构造图



Operating Temperature Range
使用温度范围：-40°C~+100°C

Parts No.	L (μH) within	CDRH2D18/HP		
		D.C.R.(Ω) : Max. (Typ.)	Saturation Current (A) ^{*A} Max. (Typ.) 20°C	Temperature Rise Current (A) ^{*B} (Typ.)
CDRH2D18/HPNP-R20NC	0.20±35%	22.0m(17.0m)	5.35(6.01)	(4.70)
CDRH2D18/HPNP-R36NC	0.36±35%	29.0m(22.0m)	4.62(5.07)	(4.10)
CDRH2D18/HPNP-R56NC	0.56±35%	33.0m(25.0m)	3.75(3.99)	(3.60)
CDRH2D18/HPNP-R82NC	0.82±35%	39.0m(30.0m)	2.91(3.32)	(3.30)
CDRH2D18/HPNP-1R1NC	1.1±35%	43.0m(33.0m)	2.50(2.72)	(2.90)
CDRH2D18/HPNP-1R7NC	1.7±30%	44.0m(35.0m)	1.85(2.20)	(2.20)
CDRH2D18/HPNP-2R2NC	2.2±30%	60.0m(48.0m)	1.60(1.90)	(1.90)
CDRH2D18/HPNP-3R3NC	3.3±30%	86.0m(69.0m)	1.45(1.63)	(1.55)
CDRH2D18/HPNP-4R7NC	4.7±30%	140m(110m)	1.20(1.35)	(1.20)
CDRH2D18/HPNP-6R3NC	6.3±30%	160m(128m)	1.05(1.19)	(1.15)
CDRH2D18/HPNP-100NC	10±30%	245m(195m)	850m(1.00)	(900m)
CDRH2D18/HPNP-150NC	15±30%	345m(275m)	700m(760m)	(640m)

Measuring Freq. (L) / 电感测试频率(L)

CDRH2D18/HP 0.2μH - 1.1μH(7.96MHz), 1.7μH - 15μH(100kHz)
CDRH2D18/LD 100kHz

Other / 其他

- *A Saturation Current: This indicates the value of D.C. current when the inductance becomes 35% lower than its nominal value.
- *B Temperature Rise Current :The actual current when temperature of coil becomes ΔT=40°C. (Ta=20°C)
- *A 直流重叠容许电流：通直流电流时，电感公称值65%的电流值。
- *B 温度上升实力电流：通直流电流时，线圈温度上升ΔT=40°C时的电流值。(Ta=20°C)

Weight (Ref.) / 重量 (参考值)

CDRH2D18/HP 0.06g
CDRH2D18/LD 0.06g

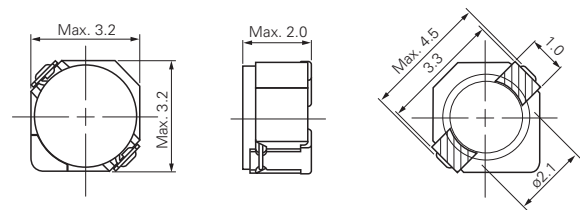
Packing Quantity / 捆包数量

CDRH2D18/HP 1,000pcs/reel
CDRH2D18/LD 1,000pcs/reel

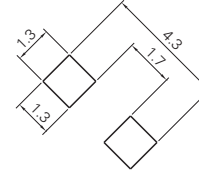
CDRH2D18/LD



DIMENSIONS (mm)
外形尺寸图



LAND PATTERNS (mm)
推荐焊盘尺寸



WIRE
线种



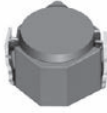
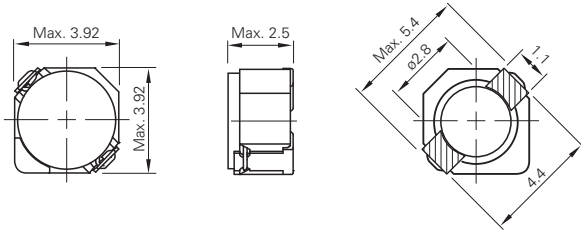
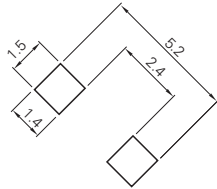
CONSTRUCTION
磁气构造图



Operating Temperature Range
使用温度范围：-40°C~+105°C

Parts No.	L (μH) within	CDRH2D18/LD		
		D.C.R.(Ω) : Max. (Typ.)	Saturation Current (A) ^{*A} Max. (Typ.) 20°C	Temperature Rise Current (A) ^{*B} (Typ.)
CDRH2D18/LDNP-2R2NC	2.2±30%	41.0m(33.0m)	850m(1.06)	(2.30)
CDRH2D18/LDNP-3R3NC	3.3±30%	54.0m(43.0m)	750m(850m)	(2.10)
CDRH2D18/LDNP-4R7NC	4.7±30%	78.0m(62.0m)	630m(710m)	(1.65)
CDRH2D18/LDNP-6R8NC	6.8±30%	106m(85.0m)	520m(620m)	(1.32)
CDRH2D18/LDNP-100NC	10±30%	180m(145m)	430m(480m)	(1.00)
CDRH2D18/LDNP-150NC	15±30%	220m(175m)	350m(400m)	(800m)
CDRH2D18/LDNP-220NC	22±30%	320m(255m)	300m(330m)	(680m)
CDRH2D18/LDNP-330NC	33±30%	460m(370m)	240m(270m)	(560m)
CDRH2D18/LDNP-470NC	47±30%	660m(530m)	200m(230m)	(480m)

CDRH3D23


DIMENSIONS (mm)
外形尺寸图

LAND PATTERNS (mm)
推荐焊盘尺寸

WIRE
线种

CONSTRUCTION
磁气构造图

 Operating Temperature Range
使用温度范围: -40°C~+105°C

Parts No.	L (μH) within	CDRH3D23		
		D.C.R.(Ω) : Max. (Typ.)	Saturation Current (A)*A Max.(Typ.) 20°C	Temperature Rise Current (A)*B (Typ.)
CDRH3D23NP-R47NC	0.47±30%	23.5m(18.8m)	3.10(3.45)	(3.70)
CDRH3D23NP-1R0PC	1.0±25%	25.0m(20.0m)	2.80(3.30)	(3.50)
CDRH3D23NP-1R5PC	1.5±25%	29.0m(24.0m)	2.20(2.67)	(3.20)
CDRH3D23NP-2R2PC	2.2±25%	38.3m(31.0m)	1.80(2.10)	(2.50)
CDRH3D23NP-3R3PC	3.3±25%	56.3m(45.0m)	1.45(1.70)	(2.20)
CDRH3D23NP-4R7PC	4.7±25%	68.8m(55.0m)	1.30(1.52)	(1.90)
CDRH3D23NP-5R6PC	5.6±25%	75.0m(60.0m)	1.10(1.28)	(1.80)
CDRH3D23NP-6R8PC	6.8±25%	87.8m(72.0m)	1.00(1.17)	(1.70)
CDRH3D23NP-8R2PC	8.2±25%	94.8m(77.0m)	950m(1.10)	(1.60)
CDRH3D23NP-100MC	10±20%	117m(95.0m)	850m(950m)	(1.40)
CDRH3D23NP-150MC	15±20%	191m(154m)	700m(810m)	(1.00)
CDRH3D23NP-220MC	22±20%	270m(219m)	550m(630m)	(800m)
CDRH3D23NP-330MC	33±20%	381m(307m)	500m(560m)	(650m)
CDRH3D23NP-470MC	47±20%	546m(441m)	350m(410m)	(600m)

Measuring Freq. (L) / 电感测试频率(L)

 CDRH3D23 100kHz
 CDRH3D14 100kHz

Other / 其他

*A Saturation Current: This indicates the value of D.C. current when the inductance becomes 35% lower than its nominal value.

*B Temperature Rise Current: The actual current when temperature of coil becomes ΔT=40°C. (Ta=20°C)

*A 直流重叠容许电流: 通直流电流时, 电感公称值65%的电流值。

*B 温度上升实力电流: 通直流电流时, 线圈温度上升ΔT=40°C时的电流值。(Ta=20°C)

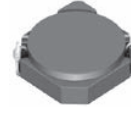
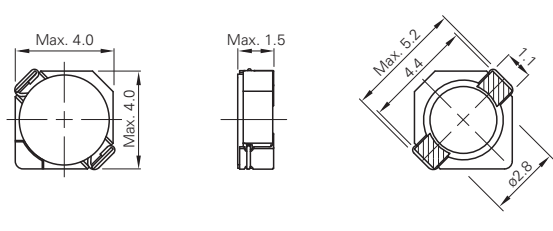
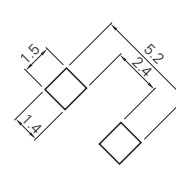
Weight (Ref.) / 重量 (参考值)

 CDRH3D23 0.1g
 CDRH3D14 0.07g

Packing Quantity / 捆包数量

 CDRH3D23 500pcs/reel
 CDRH3D14 1,000pcs/reel

CDRH3D14


DIMENSIONS (mm)
外形尺寸图

LAND PATTERNS (mm)
推荐焊盘尺寸

WIRE
线种

CONSTRUCTION
磁气构造图

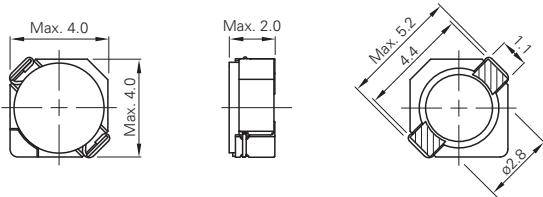
 Operating Temperature Range
使用温度范围: -40°C~+105°C

Parts No.	L (μH) within	CDRH3D14		
		D.C.R.(Ω) : Max. (Typ.)	Saturation Current (A)*A Max.(Typ.) 20°C	Temperature Rise Current (A)*B (Typ.)
CDRH3D14NP-1R2NC	1.2±25%	45.0m(36.0m)	2.15(2.35)	(2.20)
CDRH3D14NP-1R7NC	1.7±25%	63.0m(50.0m)	1.85(2.02)	(2.00)
CDRH3D14NP-2R2NC	2.2±25%	69.0m(55.0m)	1.60(1.82)	(1.75)
CDRH3D14NP-2R7NC	2.7±25%	88.0m(70.0m)	1.45(1.65)	(1.36)
CDRH3D14NP-3R3NC	3.3±25%	100m(80.0m)	1.35(1.45)	(1.24)
CDRH3D14NP-3R9NC	3.9±25%	135m(110m)	1.15(1.30)	(1.12)
CDRH3D14NP-4R7NC	4.7±25%	150m(120m)	1.10(1.16)	(960m)
CDRH3D14NP-8R2NC	8.2±25%	238m(190m)	820m(890m)	(740m)
CDRH3D14NP-100NC	10±25%	262m(210m)	750m(830m)	(690m)
CDRH3D14NP-120NC	12±25%	350m(280m)	670m(710m)	(600m)
CDRH3D14NP-150NC	15±25%	488m(390m)	600m(680m)	(580m)
CDRH3D14NP-220NC	22±25%	575m(460m)	520m(560m)	(430m)

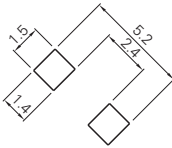
CDRH3D18



DIMENSIONS (mm)
外形尺寸图



LAND PATTERNS (mm)
推荐焊盘尺寸



WIRE
线种



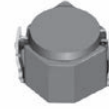
CONSTRUCTION
磁气构造图



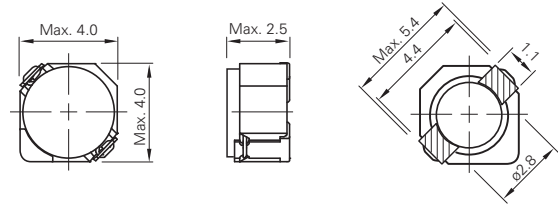
Operating Temperature Range
使用温度范围: -40°C~+105°C

Parts No.	L (μH) within	CDRH3D18		
		D.C.R.(Ω) : Max. (Typ.)	Saturation Current (A) ^{*A} Max. (Typ.) 20°C	Temperature Rise Current (A) ^{*C} (Typ.)
CDRH3D18NP-1R0NC	1.0±30%	50.0m(40.0m)	2.80(3.23)	(2.60)
CDRH3D18NP-2R2NC	2.2±30%	63.0m(50.0m)	1.80(2.12)	(2.00)
CDRH3D18NP-3R0NC	3.0±30%	69.0m(55.0m)	1.60(1.83)	(1.80)
CDRH3D18NP-4R7NC	4.7±30%	108m(86.0m)	1.35(1.44)	(1.40)
CDRH3D18NP-6R8NC	6.8±30%	150m(120m)	1.10(1.22)	(1.10)
CDRH3D18NP-100NC	10±30%	205m(164m)	900m(1.01)	(900m)
CDRH3D18NP-120NC	12±30%	275m(220m)	800m(910m)	(800m)
CDRH3D18NP-150NC	15±30%	302m(241m)	750m(820m)	(750m)
CDRH3D18NP-220NC	22±30%	424m(339m)	600m(660m)	(600m)
CDRH3D18NP-330NC	33±30%	640m(512m)	500m(540m)	(450m)
CDRH3D18NP-470NC	47±30%	964m(771m)	400m(450m)	(380m)

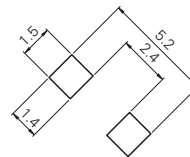
CDRH3D23/HP



DIMENSIONS (mm)
外形尺寸图



LAND PATTERNS (mm)
推荐焊盘尺寸



WIRE
线种



CONSTRUCTION
磁气构造图



Operating Temperature Range
使用温度范围: -40°C~+105°C

Parts No.	L (μH) within	CDRH3D23/HP		
		D.C.R.(Ω) : Max. (Typ.)	Saturation Current (A) ^{*B} Max. (Typ.) 20°C	Temperature Rise Current (A) ^{*C} (Typ.)
CDRH3D23HPNP-1R2PC	1.2±25%	40.4m(32.3m)	3.52(4.40)	(2.55)
CDRH3D23HPNP-2R2PC	2.2±25%	50.3m(40.2m)	2.60(3.25)	(2.25)
CDRH3D23HPNP-2R7PC	2.7±25%	62.3m(49.8m)	2.40(3.00)	(2.00)
CDRH3D23HPNP-3R3PC	3.3±25%	70.0m(56.0m)	2.20(2.75)	(1.85)
CDRH3D23HPNP-4R7PC	4.7±25%	95.5m(76.4m)	1.84(2.30)	(1.60)
CDRH3D23HPNP-5R6PC	5.6±25%	102m(81.2m)	1.66(2.08)	(1.50)
CDRH3D23HPNP-6R8PC	6.8±25%	136m(109m)	1.52(1.90)	(1.30)
CDRH3D23HPNP-8R2PC	8.2±25%	145m(116m)	1.36(1.70)	(1.25)
CDRH3D23HPNP-100MC	10±20%	198m(158m)	1.28(1.60)	(1.02)
CDRH3D23HPNP-120MC	12±20%	249m(199m)	1.14(1.40)	(950m)
CDRH3D23HPNP-150MC	15±20%	276m(221m)	1.02(1.28)	(900m)
CDRH3D23HPNP-220MC	22±20%	383m(306m)	800m(1.00)	(700m)
CDRH3D23HPNP-330MC	33±20%	555m(444m)	680m(850m)	(580m)
CDRH3D23HPNP-470MC	47±20%	798m(638m)	560m(700m)	(450m)

Measuring Freq. (L) / 电感测试频率(L)

CDRH3D18 100kHz
CDRH3D23/HP 100kHz

Other / 其他

- *A Saturation Current: This indicates the value of D.C. current when the inductance becomes 35% lower than its nominal value.
- *B Saturation Current: This indicates the value of D.C. current when the inductance becomes 30% lower than its nominal value.
- *C Temperature Rise Current: The actual current when temperature of coil becomes ΔT=40°C. (Ta=20°C)
- *A 直流重叠容许电流: 通直流电流时, 电感公称值65%的电流值。
- *B 直流重叠容许电流: 通直流电流时, 电感公称值70%的电流值。
- *C 温度上升实电流: 通直流电流时, 线圈温度上升ΔT=40°C时的电流值。(Ta=20°C)

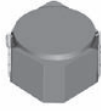
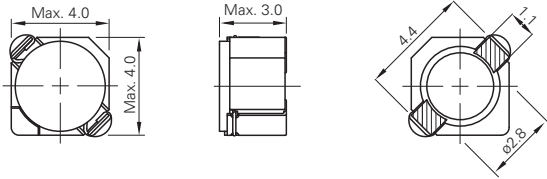
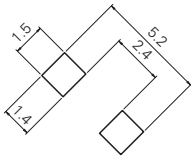
Weight (Ref.) / 重量 (参考值)

CDRH3D18 0.09g
CDRH3D23/HP 0.1g

Packing Quantity / 捆包数量

CDRH3D18 1,000pcs/reel
CDRH3D23/HP 500pcs/reel

CDRH3D28

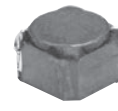
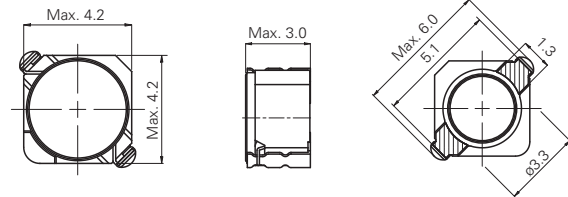
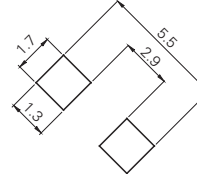

DIMENSIONS (mm)
外形尺寸图

LAND PATTERNS (mm)
推荐焊盘尺寸

WIRE
线种

CONSTRUCTION
磁气构造图

 Operating Temperature Range
使用温度范围：-40℃~+105℃

Parts No.	L (μH) within	CDRH3D28		
		D.C.R.(Ω) : Max. (Typ.)	Saturation Current (A) ^{*A} Max. (Typ.) 20°C	Temperature Rise Current (A) ^{*B} (Typ.)
CDRH3D28NP-1R0NC	1.0±30%	37.5m(30.0m)	3.00(3.52)	(2.60)
CDRH3D28NP-3R3NC	3.3±30%	72.1m(57.7m)	2.00(2.35)	(1.85)
CDRH3D28NP-4R7NC	4.7±30%	88.3m(70.6m)	1.65(1.95)	(1.62)
CDRH3D28NP-6R8NC	6.8±30%	119m(95.0m)	1.24(1.46)	(1.32)
CDRH3D28NP-100NC	10±30%	145m(116m)	1.05(1.23)	(1.18)
CDRH3D28NP-150NC	15±30%	213m(170m)	900m(1.05)	(1.02)
CDRH3D28NP-220NC	22±30%	335m(268m)	760m(900m)	(740m)
CDRH3D28NP-330NC	33±30%	481m(385m)	580m(680m)	(630m)
CDRH3D28NP-470NC	47±30%	599m(479m)	480m(560m)	(560m)

CDRH40D28


DIMENSIONS (mm)
外形尺寸图

LAND PATTERNS (mm)
推荐焊盘尺寸

WIRE
线种

CONSTRUCTION
磁气构造图

 Operating Temperature Range
使用温度范围：-40℃~+105℃

Parts No.	L (μH) within	CDRH40D28		
		D.C.R.(Ω) : Max. (Typ.)	Saturation Current (A) ^{*A} Max. (Typ.) 20°C	Temperature Rise Current (A) ^{*B} (Typ.)
CDRH40D28NP-1R5NC	1.5±30%	42.0m(33.6m)	2.90(3.57)	(2.40)
CDRH40D28NP-2R2NC	2.2±30%	47.0m(37.6m)	2.20(2.97)	(2.10)
CDRH40D28NP-2R7NC	2.7±30%	52.0m(41.2m)	2.10(2.74)	(2.00)
CDRH40D28NP-3R3NC	3.3±30%	58.0m(46.7m)	1.90(2.39)	(1.90)
CDRH40D28NP-4R7NC	4.7±30%	63.0m(50.0m)	1.65(2.02)	(1.75)
CDRH40D28NP-5R6NC	5.6±30%	75.0m(59.6m)	1.50(1.88)	(1.60)
CDRH40D28NP-6R8NC	6.8±30%	80.0m(64.0m)	1.30(1.63)	(1.55)
CDRH40D28NP-100PC	10±25%	125m(100m)	1.10(1.38)	(1.20)
CDRH40D28NP-120PC	12±25%	151m(121m)	1.00(1.25)	(1.10)
CDRH40D28NP-150PC	15±25%	218m(174m)	900m(1.15)	(880m)
CDRH40D28NP-180PC	18±25%	231m(185m)	850m(1.06)	(830m)
CDRH40D28NP-220PC	22±25%	262m(211m)	800m(1.00)	(800m)
CDRH40D28NP-330PC	33±25%	420m(336m)	620m(780m)	(550m)
CDRH40D28NP-390PC	39±25%	619m(495m)	600m(750m)	(480m)
CDRH40D28NP-470PC	47±25%	685m(548m)	500m(630m)	(450m)
CDRH40D28NP-560PC	56±25%	755m(604m)	450m(560m)	(430m)
CDRH40D28NP-680PC	68±25%	836m(669m)	420m(530m)	(400m)

Measuring Freq. (L) / 电感测试频率(L)

 CDRH3D28 100kHz
 CDRH40D28 100kHz

Other / 其他

- *A Saturation Current: This indicates the value of D.C. current when the inductance becomes 35% lower than its nominal value.
- *B Temperature Rise Current: The actual current when temperature of coil becomes ΔT=40°C. (Ta=20°C)
- *A 直流重叠容许电流：通直流电流时，电感称值65%的电流值。
- *B 温度上升实力电流：通直流电流时，线圈温度上升ΔT=40℃时的电流值。(Ta=20℃)

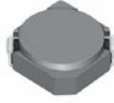
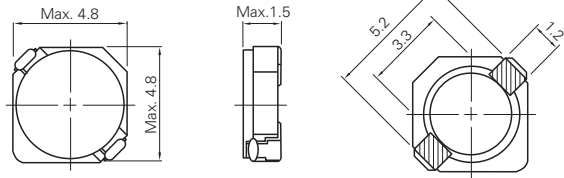
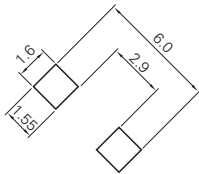
Weight (Ref.) / 重量 (参考值)

 CDRH3D28 0.2g
 CDRH40D28 0.2g

Packing Quantity / 捆包数量

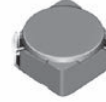
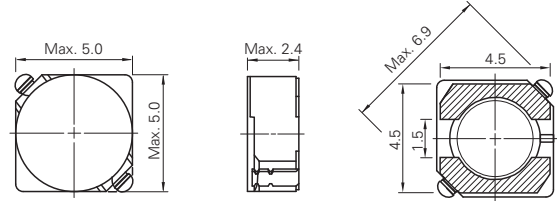
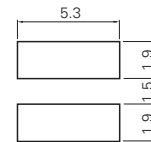
 CDRH3D28 500pcs/reel
 CDRH40D28 500pcs/reel

CDRH4D14

DIMENSIONS (mm)
外形尺寸图LAND PATTERNS (mm)
推荐焊盘尺寸WIRE
线种CONSTRUCTION
磁气构造图Operating Temperature Range
使用温度范围: -40°C~+100°C

Parts No.	L (μH) within	CDRH4D14		
		D.C.R.(Ω) : Max. (Typ.)	Saturation Current (A) ^{*A} Max. (Typ.) 20°C	Temperature Rise Current (A) ^{*B} (Typ.)
CDRH4D14NP-1R2NC	1.2±30%	33.0m(27.0m)	1.90(2.52)	(2.60)
CDRH4D14NP-2R2NC	2.2±30%	48.0m(39.0m)	1.60(2.03)	(2.35)
CDRH4D14NP-3R0NC	3.0±30%	63.0m(51.0m)	1.40(1.78)	(2.15)
CDRH4D14NP-4R7NC	4.7±30%	90.0m(72.0m)	1.10(1.46)	(1.55)
CDRH4D14NP-6R8NC	6.8±30%	125m(100m)	900m(1.20)	(1.20)
CDRH4D14NP-8R2NC	8.2±30%	175m(138m)	750m(1.00)	(990m)
CDRH4D14NP-100MC	10±20%	185m(150m)	730m(930m)	(900m)
CDRH4D14NP-120MC	12±20%	245m(193m)	640m(850m)	(800m)
CDRH4D14NP-150MC	15±20%	270m(220m)	590m(760m)	(740m)
CDRH4D14NP-220MC	22±20%	400m(320m)	500m(640m)	(630m)
CDRH4D14NP-330MC	33±20%	560m(450m)	410m(520m)	(500m)
CDRH4D14NP-470MC	47±20%	780m(630m)	350m(460m)	(420m)
CDRH4D14NP-560MC	56±20%	1.09(867m)	300m(390m)	(360m)
CDRH4D14NP-680MC	68±20%	1.20(960m)	280m(360m)	(330m)

CDRH4D22/HP

DIMENSIONS (mm)
外形尺寸图LAND PATTERNS (mm)
推荐焊盘尺寸WIRE
线种CONSTRUCTION
磁气构造图Operating Temperature Range
使用温度范围: -40°C~+100°C

Parts No.	L (μH) within	CDRH4D22/HP		
		D.C.R.(Ω) : Max. (Typ.)	Saturation Current (A) ^{*A} Max. (Typ.) 20°C	Temperature Rise Current (A) ^{*B} (Typ.)
CDRH4D22HNP-1R2NC	1.2±25%	26.5m(21.2m)	4.20(4.58)	(3.20)
CDRH4D22HNP-1R5NC	1.5±25%	31.3m(25.0m)	3.90(4.32)	(3.00)
CDRH4D22HNP-2R2NC	2.2±25%	44.3m(35.4m)	3.20(3.54)	(2.40)
CDRH4D22HNP-2R7NC	2.7±25%	57.8m(46.3m)	2.80(3.02)	(2.20)
CDRH4D22HNP-3R5NC	3.5±25%	65.1m(52.0m)	2.50(2.73)	(2.00)
CDRH4D22HNP-4R7NC	4.7±25%	82.6m(66.0m)	2.20(2.38)	(1.80)
CDRH4D22HNP-5R2NC	5.2±25%	92.8m(74.3m)	2.00(2.20)	(1.70)
CDRH4D22HNP-6R3NC	6.3±25%	110m(87.9m)	1.85(2.05)	(1.40)
CDRH4D22HNP-8R2NC	8.2±25%	128m(103m)	1.65(1.80)	(1.35)
CDRH4D22HNP-100MC	10±20%	144m(115m)	1.50(1.65)	(1.30)
CDRH4D22HNP-120MC	12±20%	187m(150m)	1.30(1.48)	(1.10)
CDRH4D22HNP-150MC	15±20%	213m(170m)	1.20(1.36)	(850m)
CDRH4D22HNP-180MC	18±20%	239m(191m)	1.10(1.25)	(800m)
CDRH4D22HNP-220MC	22±20%	267m(214m)	1.05(1.20)	(750m)
CDRH4D22HNP-270MC	27±20%	394m(315m)	900m(1.03)	(700m)
CDRH4D22HNP-330MC	33±20%	449m(359m)	800m(930m)	(650m)
CDRH4D22HNP-390MC	39±20%	668m(534m)	750m(840m)	(520m)
CDRH4D22HNP-470MC	47±20%	723m(579m)	700m(790m)	(500m)
CDRH4D22HNP-560MC	56±20%	810m(648m)	650m(720m)	(480m)
CDRH4D22HNP-680MC	68±20%	913m(730m)	600m(660m)	(450m)
CDRH4D22HNP-820MC	82±20%	1.22(977m)	550m(620m)	(400m)
CDRH4D22HNP-101MC	100±20%	1.37(1.10)	480m(540m)	(350m)

Measuring Freq. (L) / 电感测试频率(L)

CDRH4D14 100kHz, 1V
CDRH4D22/HP 100kHz

Other / 其他

*A Saturation Current: This indicates the value of D.C. current when the inductance becomes 35% lower than its nominal value.

*B Temperature Rise Current: The actual current when temperature of coil becomes ΔT=40°C. (Ta=20°C)

*A 直流重叠容许电流: 通直流电流时, 电感公称值65%的电流值。

*B 温度上升实力电流: 通直流电流时, 线圈温度上升ΔT=40°C时的电流值。(Ta=20°C)

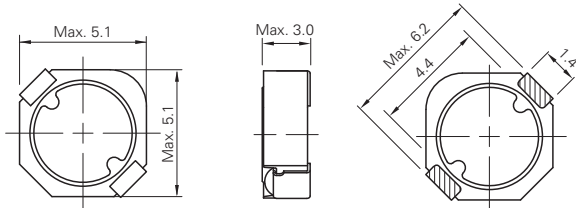
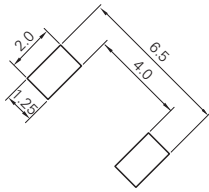
Weight (Ref.) / 重量 (参考值)

CDRH4D14 0.1g
CDRH4D22/HP 0.2g

Packing Quantity / 捆包数量

CDRH4D14 1,000pcs/reel
CDRH4D22/HP 2,000pcs/reel

CDRH4D28C/LD


DIMENSIONS (mm)
外形尺寸图

LAND PATTERNS (mm)
推荐焊盘尺寸

WIRE
线种

CONSTRUCTION
磁气构造图

 Operating Temperature Range
使用温度范围: -40°C~+105°C

Parts No.	L (μH) within	CDRH4D28C/LD		
		D.C.R.(Ω) : Max. (Typ.)	Saturation Current (A) ^{*A} Max. (Typ.) 20°C	Temperature Rise Current (A) ^{*B} (Typ.)
CDRH4D28CLDNP-1R0PC	1.0±25%	17.5m(14.0m)	3.00(3.25)	(4.90)
CDRH4D28CLDNP-2R2PC	2.2±25%	23.8m(19.0m)	2.00(2.32)	(3.60)
CDRH4D28CLDNP-3R3PC	3.3±25%	28.9m(23.0m)	1.60(1.85)	(3.20)
CDRH4D28CLDNP-4R7PC	4.7±25%	36.3m(29.0m)	1.50(1.72)	(2.90)
CDRH4D28CLDNP-6R8PC	6.8±25%	48.8m(39.0m)	1.20(1.35)	(2.40)
CDRH4D28CLDNP-100PC	10±25%	67.5m(54.0m)	900m(1.13)	(1.80)
CDRH4D28CLDNP-150PC	15±25%	93.4m(75.0m)	810m(920m)	(1.60)
CDRH4D28CLDNP-220PC	22±25%	140m(112m)	650m(720m)	(1.25)
CDRH4D28CLDNP-330PC	33±25%	223m(179m)	550m(620m)	(920m)
CDRH4D28CLDNP-470PC	47±25%	272m(218m)	430m(490m)	(860m)
CDRH4D28CLDNP-680PC	68±25%	366m(293m)	360m(410m)	(720m)
CDRH4D28CLDNP-101PC	100±25%	520m(416m)	300m(340m)	(610m)

Measuring Freq. (L) / 电感测试频率(L)

 CDRH4D28C/LD 100kHz
 CDPH4D19F 100kHz

Other / 其他

- *A Saturation Current: This indicates the value of D.C. current when the inductance becomes 35% lower than its nominal value.
- *B Temperature Rise Current: The actual current when temperature of coil becomes ΔT=40°C. (Ta=20°C)
- *A 直流重叠容许电流: 通直流电流时, 电感公称值65%的电流值。
- *B 温度上升实力电流: 通直流电流时, 线圈温度上升ΔT=40°C时的电流值。(Ta=20°C)

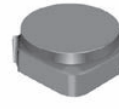
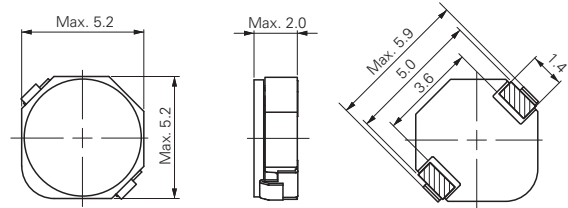
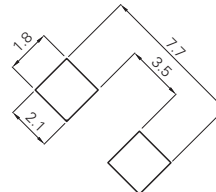
Weight (Ref.) / 重量 (参考值)

 CDRH4D28C/LD 0.2g
 CDPH4D19F 0.2g

Packing Quantity / 捆包数量

 CDRH4D28C/LD 2,000pcs/reel
 CDPH4D19F 1,000pcs/reel

CDPH4D19F


DIMENSIONS (mm)
外形尺寸图

LAND PATTERNS (mm)
推荐焊盘尺寸

WIRE
线种

CONSTRUCTION
磁气构造图

 Operating Temperature Range
使用温度范围: -40°C~+105°C

Parts No.	L (μH) within	CDPH4D19F		
		D.C.R.(Ω) : Max. (Typ.)	Saturation Current (A) ^{*A} Max. (Typ.) 20°C	Temperature Rise Current (A) ^{*B} (Typ.)
CDPH4D19FNP-3R3MC	3.3±20%	33.0m(26.0m)	1.50(2.00)	(3.80)
CDPH4D19FNP-4R7MC	4.7±20%	38.0m(30.0m)	1.15(1.48)	(3.30)
CDPH4D19FNP-6R8MC	6.8±20%	50.0m(40.0m)	1.00(1.25)	(3.02)
CDPH4D19FNP-8R0MC	8.0±20%	56.0m(45.0m)	900m(1.20)	(2.68)
CDPH4D19FNP-100MC	10±20%	65.0m(52.0m)	800m(950m)	(2.32)
CDPH4D19FNP-150MC	15±20%	95.0m(75.0m)	660m(900m)	(1.88)
CDPH4D19FNP-220MC	22±20%	135m(108m)	540m(720m)	(1.44)
CDPH4D19FNP-330MC	33±20%	200m(160m)	430m(600m)	(1.25)
CDPH4D19FNP-470MC	47±20%	293m(234m)	360m(500m)	(1.03)